

# Hemingbrough Geography Curriculum

**Theme:** My Class, My School, My Road

**Phase:** EYFS

**Year Group:** R

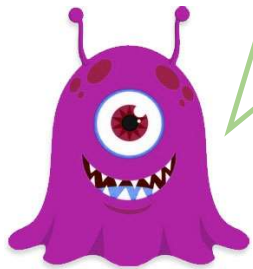
**Strand:** Physical & Human Geography

**By the end of the theme I should be able to:**

- What the route from my classroom to other areas of the school looks like on a floor plan.
- What the school looks like from above and what the surrounding grounds look like.
- What the route from home to school looks like on a map.
- How to give instructions on how to get from one place to another.



Which parts of the school do you recognise?



KEY WORDS	
<b>aerial view</b>	a view from above
<b>floor plan</b>	the layout of rooms on one floor of a building
<b>grounds</b>	the land around a building
<b>human geography</b>	features of land that have been impacted by human activity
<b>physical geography</b>	natural features of land
<b>route</b>	to be present all around
<b>village</b>	a small group of houses, perhaps with a few shops, that are often in the countryside.



**Aerial view**



**Classroom Layout**

**Map**

**Floor plan**