

# Hemingbrough Geography Curriculum

**Theme:** My Class, My School, My Road

**Phase:** EYFS

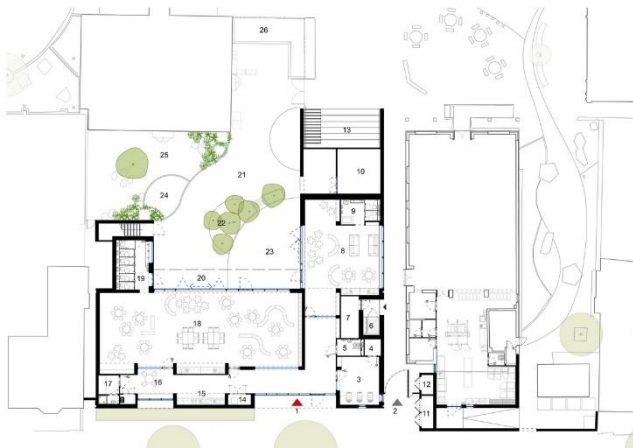
**Year Group:** R

**Strand:** Physical & Human Geography

**By the end of the theme I should be able to:**

- What the route from my classroom to other areas of the school looks like on a floor plan.
- What the school looks like from above and what the surrounding grounds look like.
- What the route from home to school looks like on a map.
- How to give instructions on how to get from one place to another.

**Can you find/explain the route from your classroom to another area of school on a floor-plan?**



**EXAMPLE FLOOR PLAN**

**Can you draw and label a map of your journey to school?**



**Map**

KEY WORDS	
aerial view	a view from above
floor plan	the layout of rooms on one floor of a building
grounds	the land around a building
human geography	features of land that have been impacted by human activity
physical geography	natural features of land
route	the journey you take from place to place
village	a small group of houses, perhaps with a few shops, that are often in the countryside.



**Aerial view**

**Can you tell a story about a journey you have made in school or in the local area?**