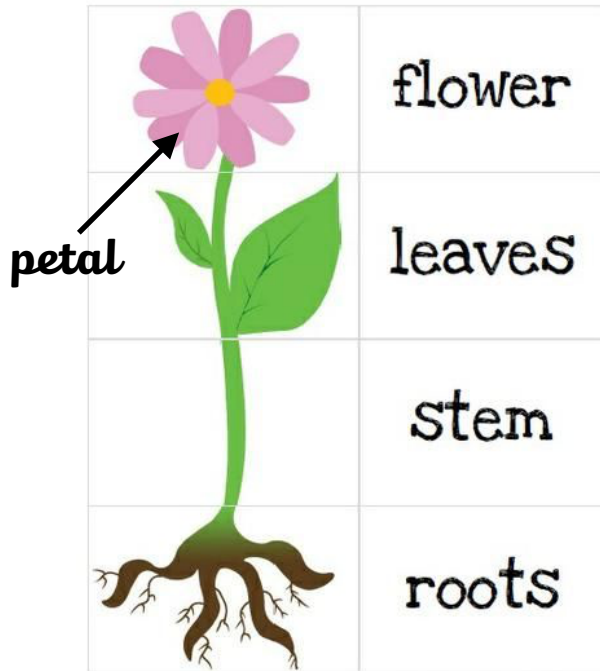
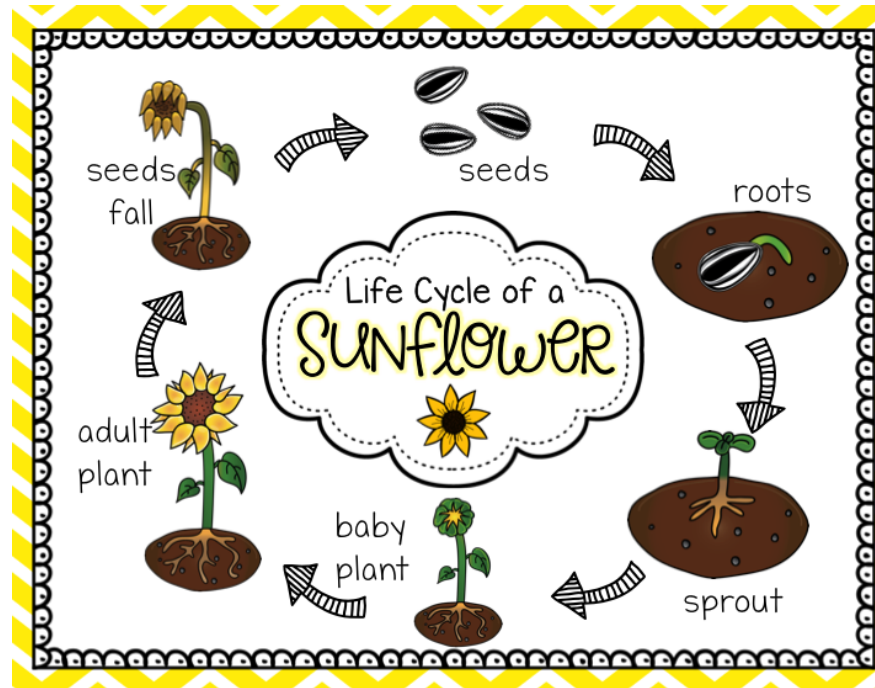


# Knowledge Organiser - Plants

## Parts of a Plant



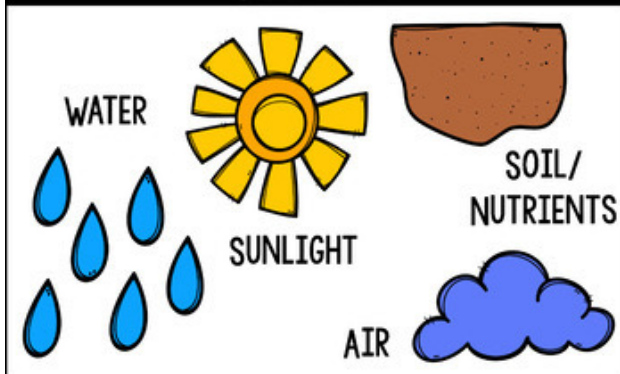
## Life Cycle



## Key Vocabulary

embryo	The tiny root and shoot which will grow into the adult plant.
seed coat	A tough outer covering.
food store	A store of food for the young plant to use until it has grown enough to make its own food.
germination	The process in which the seed soaks up water and swells, and the tiny plant bursts out of its shell, when the conditions are right.

## What Plants Needs to Survive



## Difference between a seed and a bulb



Every single seed has the beginnings of a new plant inside it, along with a little store of food to help it to grow. A bulb lets the plant rest underground over the winter when it is too cold, then grow back later in the year when the conditions are right.

